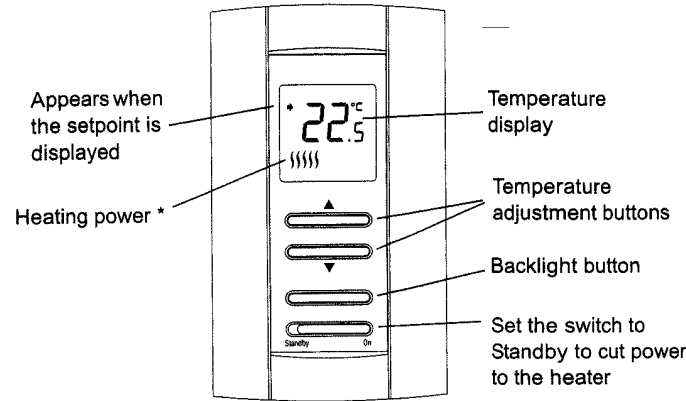


1 Description

Honeywell's TL7135A thermostat can be connected to an electric heater to control the room temperature.

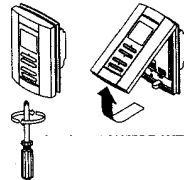


* The thermostat displays the heater duty cycle required to maintain the desired temperature. For example, if the heater is activated 40 percent of the time, SS is displayed.

Display	S	SS	SSS	SSSS	SSSSS
% of duty cycle	1 to 24%	25 to 49%	50 to 74%	75 to 99%	100%

2 Assembly/Disassembly

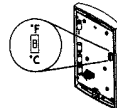
- To remove the control module from the power base, loosen the captive screw underneath the thermostat and pull the two components apart as shown.
- To install the control module onto the power base, reverse the above procedure.



NOTE: Always keep the thermostat's vents clean and unobstructed.

3 Configuration

You can select the temperature display ($^{\circ}\text{C}$ or $^{\circ}\text{F}$) using a DIP switch (S1) on the back of the control module.



4 Power-up

As soon as the thermostat is powered, it undergoes a series of tests before displaying the actual temperature.



5 Error Messages

LO: The measured temperature is below 0°C (32°F). Heating is activated.



HI: The measured temperature is above 50°C (122°F).



6 Backlight

The display illuminates for 5 seconds when the backlight button is pressed. When either of the $\blacktriangle\blacktriangledown$ buttons is pressed, the display illuminates for 10 seconds.

7 Temperature Setting

The thermostat normally displays the actual temperature. To view the setpoint, press one of the $\blacktriangle\blacktriangledown$ buttons once. The setpoint will appear for 5 seconds. To change the setpoint, press one of the $\blacktriangle\blacktriangledown$ buttons until the desired temperature is displayed. To scroll the setpoint faster, do not release the button.

8 Technical Specifications

- Power supply:** refer to the power base installation instructions
- Setpoint range:** 5°C to 30°C (40°F - 86°F)
- Display resolution:** 0.5°C (1°F)
- Storage:** -20°C to 50°C (-4°F to 120°F)
- Heating cycle length:** 15 minutes

Warranty

Honeywell warrants this product, excluding battery, to be free from defects in the workmanship or materials, under normal use and service, for a period of five (5) years from the date of purchase by the consumer. If at any time during the warranty period the product is determined to be defective or malfunctions, Honeywell shall repair or replace it (Honeywell's option).

- If the product is defective,
- return it, with a bill of sale or other dated proof of purchase, to the place from which you purchased it, or
 - call Honeywell Customer Care at 1-800-468-1502. Customer Care will make a determination whether the product should be returned to the following address: Honeywell Return Goods, Dock 4 MN10-3860, 1885 Douglas Dr N, Golden Valley MN 55422, or whether a replacement product can be sent to you.

This warranty does not cover removal or reinstallation costs. This warranty shall apply if it is shown by Honeywell that the defect or malfunction was caused by damage which occurred while the product was in the possession of a consumer.

Honeywell's sole responsibility shall be to repair or replace the product within the terms stated above. HONEYWELL SHALL NOT BE LIABLE FOR ANY LOSS OR DAMAGE, ANY KIND, INCLUDING ANY INCIDENTAL OR CONSEQUENTIAL DAMAGES RESULTING, DIRECTLY OR INDIRECTLY, FROM ANY BREACH OF ANY WARRANTY, EXPRESS OR IMPLIED, OR ANY OTHER FAILURE OF THIS PRODUCT. Some states do not allow the exclusion or limitation of incidental or consequential damages, so this limitation may not apply to you.

THIS WARRANTY IS THE ONLY EXPRESS WARRANTY HONEYWELL MAKES FOR THIS PRODUCT. THE DURATION OF ANY IMPLIED WARRANTIES, INCLUDING WARRANTIES OF MERCHANTABILITY AND FITNESS FOR A PARTICULAR PURPOSE, IS HEREBY LIMITED TO THE FIVE-YEAR DURATION OF THIS WARRANTY. Some provinces do not allow limitations on how long an implied warranty lasts, so this above limitation may not apply to you.

This warranty gives you specific legal rights, and you may have other rights which vary from province to province.

If you have any questions concerning this warranty, please write Honeywell Customer Relations, 1985 Douglas Dr, Golden Valley, MN 55422 or call 1-800-468-1502. In Canada, write Retail Products ON15-02H, Honeywell Limited/Honeywell Limitée, 35 Dwyne Drive, Scarborough, Ontario M1V4Z9.

Customer Assistance

If you have any questions about the operation of your thermostat, please go to www.honeywell.com/yourhome, or call Honeywell Customer Care toll-free at 1-800-468-1502.

Installation Guide
Power Base

Guía de instalación
Base de alimentación

1 Parts supplied

- One (1) power base
- Two (2) screws
- Four (4) solderless connectors for copper wires.

NOTE: Special CO/ALR solderless connectors must be used when connecting with aluminum conductors.

2 Guidelines

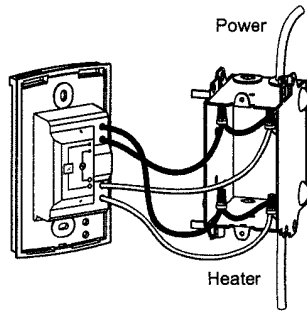
TURN OFF POWER TO THE HEATING SYSTEM AT THE MAIN POWER PANEL TO AVOID ELECTRICAL SHOCK.

The installation must be carried out by an electrician.

- ▶ Install the thermostat onto an electrical box.
- ▶ Install the thermostat about 5 feet high, on an inside wall facing the heater.
- ▶ Avoid locations where there are air drafts (such as the top of a staircase or an air outlet), dead air spots (such as behind a door), or direct sunlight.
- ▶ Do not install the thermostat on a wall that conceals chimney or stove pipes.

3 Procedure

- 1 Loosen the captive screw underneath the thermostat.
- 2 Separate the control module from the power base by pulling the bottom sections apart.
- 3 Connect the power and heater wires to the corresponding wires of the power base.
- 4 Push the wires into the electrical box.
- 5 Secure the power base to the electrical box using the supplied screws.
- 6 If there are any switches on the back of the control module for configuring the thermostat, place them in the appropriate positions.
- 7 Install the control module back onto the base.
- 8 Apply power to the heating system.



4 Technical Specifications

Models	Supply	Max. Load	Power	Wiring
TL7230A TL7235A TL8230A	240 VAC, 50/60Hz 208 VAC, 50/60Hz	15 A	3600 W 3120 W	4w/DP
TL7130A TL7135A TL8130A	240 VAC, 50/60Hz 208 VAC, 50/60Hz	16.7 A	4000 W 3470 W	4w/SP

Storage: -4°F to 120°F (-20°C to 50°C)

Size (H • W • D): 4.9 x 2.7 x 0.9 in. (124 x 70 x 23 mm)

Certifications:



1 Materiales provistos

- Una (1) base de alimentación
- Dos (2) tornillos
- Cuatro (4) conectores sin soldadura para hilos de cobre.

NOTA: Deben usarse conectores sin soldadura CO/ALR especiales cuando se conecten conductores en aluminio.

2 Instrucciones

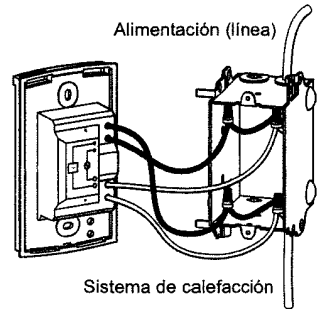
CORTAR LA ALIMENTACIÓN DEL SISTEMA DE CALEFACCIÓN EN EL PANEL PRINCIPAL PARA EVITAR RIESGOS DE CHOQUE ELÉCTRICO

Un electricista debe hacer la instalación

- ▶ Instalar el termostato en una caja de electricidad.
- ▶ Instalarlo alrededor de 1.5 m sobre el nivel del suelo y en una pared interior que esté frente al calefactor.
- ▶ Deben evitarse los lugares con corrientes de aire (en lo alto de un escalera o en una salida de aire), los puntos en los que el aire no circula (detrás de una puerta) o la luz directa del sol.
- ▶ No debe instalarse el termostato en una pared que oculte un conducto de chimenea o de calefacción.

3 Procedimiento

- 1 Aflojar el tornillo cautivo que está debajo del termostato.
- 2 Separar el módulo de control de la base de alimentación tirando de ambos en la base.
- 3 Conectar los cables de alimentación y los del calentador a los correspondientes de la base de alimentación.
- 4 Empujar los cables en la caja de electricidad.
- 5 Asegurar la base de alimentación a la caja de electricidad con los tornillos proporcionados.
- 6 Configurar los selectores que haya en la parte posterior del módulo de control (si fuera necesario).
- 7 Instalar el módulo de control nuevamente en su base.
- 8 Alimentar en electricidad el sistema de calefacción.



4 Especificaciones técnicas

Modelos	Alimentación	carga máxima	Potencia	Cableado
TL7230A TL7235A TL8230A	240 VAC, 50/60Hz 208 VAC, 50/60Hz	15 A	3600 W 3120 W	4w/DP
TL7130A TL7135A TL8130A	240 VAC, 50/60Hz 208 VAC, 50/60Hz	16.7 A	4000 W 3470 W	4w/SP

Almacenamiento: -4°F a 120°F (-20°C a 50°C)

Dimensiones (Alto • Ancho • Profundidad): 4.9 x 2.7 x 0.9 in. (124 x 70 x 23 mm)

Certificaciones:



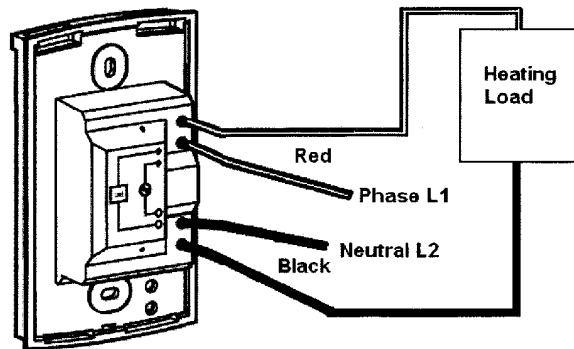
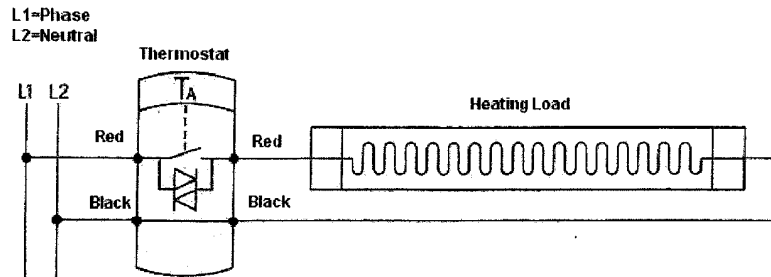
LineVoltPro Addendum

Note

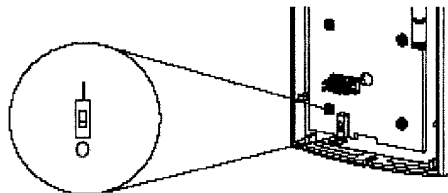
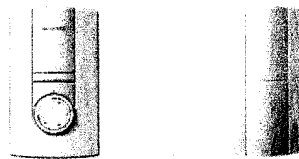
Read installation instructions before installing.
Follow local wiring codes and standards.

Thermostat Wiring Diagrams

Maximum load 240 Volt, 16.7 Amps (resistive).



TL7130A1006 & TH116-A-240S Only
For correct operation set S3 to position 0.



Honeywell Ltd
PO Box 2196
Auckland 1000

Ph 09 6235050
Fax 09 6235060